

# Model 600AJ

## ARTICULATING BOOM LIFTS



### MORE ECONOMIC

- Cut fuel consumption and operating costs with variable engine control.

### MORE PRODUCTIVE

- Equipped with hydrostatic drive for easy, precise, infinitely-variable-speed manoeuvrability.

### MORE ACCESS

- Conquer rough terrain with standard oscillating axle and four-wheel drive, delivering optimised grip and stability. Work in tighter spaces thanks to compact design with zero tailswing.

### SMART DESIGN

- Customer-preferred controls mean fewer buttons and switches used to position the platform and less time spent learning to use the platform controls.



### Standard Features

- 0.91 m x 1.83 m low mount platform
- Side entry with drop bar mid rail
- Multiple function operation
- Full proportional drive joystick control with integral thumb steer switch
- Full proportional main boom and swing joystick control
- Multiple speed control for lower boom, telescope and platform rotate
- Selectable creep speed on drive / lift and swing functions
- Platform console machine status light panel \*
- Load sensing system
- AC power cable to platform
- Engine distress warning /shut down system \*\*
- Gull-wing turntable hoods
- Swing-out engine tray
- Control ADE® (Advanced Design Electronics) System
- Hydrostatic drive transmission
- Horn
- 4 degree tilt alarm and indicator light
- IN 355/55D 625 foam filled lug tread tyres
- Lifting/tie down lugs
- Hour meter
- Ground control selector switch with key lock
- Catalytic purifier muffler
- Skyguard Skyline active system
- Platform tool tray

### Standard Specifications

- Diesel Engine DEUTZ TD2.2 L3 (49hp, 36.4 kw)
- Fuel Tank Capacity 114 L
- Hydraulic Tank Capacity 115.8 L
- Auxiliary Power 12V DC
- Tyres IN 355/55 D625 (Foam Filled)

### Accessories & Options

- 0.91 m x 2.44 m low mount platform
- 0.76 m x 0.91 m low mount platform, rear entry \*\*\*\*\*
- Tri entry 0.91 m x 1.83 m low mount platform
- Side entry with inward swing gate
- 13 mm air line to platform
- Spark arresting type muffler
- Four wheel drive
- Four wheel steer/Two wheel steer/Crab steer \*\*\*
- Oscillating front axle
- SkyPower® package 4000 watt on-board generator
- Nite-Bright® package \*\*\*\*
- Tow package
- All motion alarm
- Light package \*\*\*\*\*
- Platform worklights
- Head and tail lights
- Flashing Amber Beacon
- Plugs & Sockets
- Hostile environment package \*\*\*\*\*
- Skyguard with beacon
- Skyguard without beacon
- Skyguard Skyeye active system
- Corner storage tray
- ClearSky Locate
- ClearSky CAN

\* Provides indicator lights at platform control console for system distress- low fuel- tilt light- and foot switch status

\*\* Low oil pressure and high coolant temperature alarms with shut-down enabled/disabled by analyser

\*\*\* Only available with four wheel drive on models 600A and 600AJ with 2.49m wide chassis and 800A and 800AJ

\*\*\*\* Consists of six 40-watt lights, four turntable mounted lights and two platform mounted lights.

\*\*\*\*\* Includes platform mounted work lights and head & tail lights

\*\*\*\*\* Includes console cover, boom wipers and cylinder bellows

\*\*\*\*\* Available only with drop bar type entry

# Model 600AJ

## ARTICULATING BOOM LIFTS

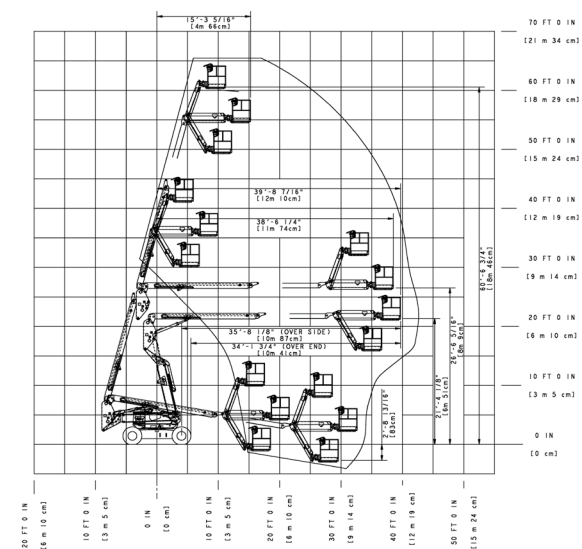
### Performance

• Working Height	20.46 m
• Platform Height	18.46 m
• Horizontal Outreach	12.10 m
• Working Outreach**	12.75 m
• Up and Over Height	8.09 m
• Swing	360° (Continuous)
• Platform Capacity (Unrestricted)	230 kg
• Platform Rotator (Hydraulic)	180°
• Jib - Overall Length	1.83 m
• Jib - Range of articulation	130° (+70° / -60°)
A. Platform Size	0.91 m x 1.83 m
B1. Overall Width (Axles Retracted)	2.49 m
C. Tailswing (working condition)	Zero
D. Stowed Height	2.57 m
E1. Stowed Length	8.82 m
F. Wheelbase	2.48 m
G. Ground Clearance	0.30 m
• Machine weight*	10,660 kg
• Maximum Ground Bearing Pressure	5.3 kg/cm <sup>2</sup>
• Drive Speed 2WD	6.8 km/h
• Drive Speed 4WD	6.8 km/h
• Gradeability 2WD	30%
• Gradeability 4WD	45%
• Axle Oscillation	0.20 m***
• Turning Radius - Inside	3.33 m 2WS
• Turning Radius - Outside	5.36 m 2WS / 2.95 m 4WS

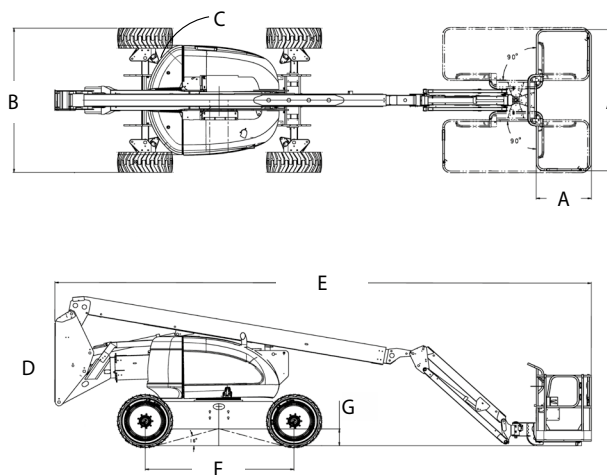


\* Certain options or country standards may increase weight and/or dimensions  
\*\* Incl. 0.65 m outreach beyond platform

### Reach Diagram



### Dimensions



### IMPORTANT

JLG is continually researching and developing products and reserves the right to make modifications without prior notice. All data in this document is indicative. Certain options or country standards will increase weight. Specifications may change to meet country standards or with the addition of optional equipment.

Due to continuous product improvements, JLG Industries reserves the right to make specification and/or equipment changes without prior notification.



### JLG EMEA BV

Polaris Avenue 63  
2132 JH Hoofddorp  
The Netherlands  
Tel.: +31 (0)23 565 5665  
[www.jlg.com](http://www.jlg.com)

An Oshkosh Corporation Company